



<sup>®</sup>  
**mart**  
**co**  
**mart**  
**ma**  
**rt**



# XTi12™



### Mart Cart Exclusive 12 Volt System

- Single 12 Volt 35 Amp Hour Battery.
- Up to 22 hours of shopping on a single charge.
- Simplicity and Reliability of a single battery system.
- One Battery...Fewer Replacements...

### **Intelli-Charge™** System:

Uses both audible and visual notification feature to increase the battery life of your carts. Ensures properly charged carts for your customers while offering higher performance and a lower cost of ownership.



45.7 cm (18 in) Marine Grade Vinyl Seat with Optional Adjustable Armrests

Powder Coated Basket  
50 x 61 x 38 cm (WXLXH)  
(20 x 24 x 15 in)  
113,071 cu m  
6,900 in<sup>3</sup> capacity

Full Length Bumpers

ABS Plastic Cover with Thru-Color

Anti-Tip Swivel Castors

1.8 cm (6 ft) Cord with Improved Cord Storage

3 Amp Smart Charger

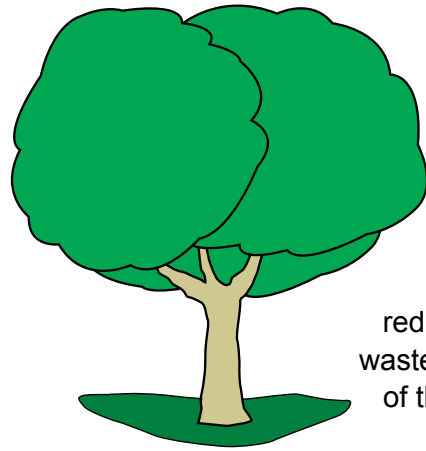
Fixture Height Steel Bumper

2.5 cm (8 in) Non-Marking Solid Tires

### Patented Hub Motor Technology

- Zero Degree Turning Radius - The XT12™ offers The Most Narrow Turning Radius in the Industry.
- Dynamic & Regenerative Braking PLUS Electro-Mechanical Parking Brake.
- Non-Marking, Solid Rubber, 2.5 cm (8 in) Front Tire.





## WHY GREEN

Environmental experts will be the first to tell you that when it comes to protecting the environment, when it comes to being **GREEN**, conservation comes first. At Mart Cart®, we're doing our part to reduce our environmental footprint through the conservation of water, the reduction of harmful toxins and the elimination of waste products. The **NEWXTi12™ GREEN** cart is the result of these efforts.

# XTi12™ GREEN

## POWDER COATED VS. CHROME

Mart Cart® has now eliminated the chroming process in exchange for a much **GREENer** powder coating process. In doing so we are saving over 2,460,517.7 liters (650,000 gallons) of water annually as well as over 3,500 BTUs of natural gas. This move has also eliminated 11,793.4 to 22,679.6 kilograms (13 to 25 tons) of dangerous waste product produced as a result of the chroming process.



Powder coated components of the cart are now 100% recyclable and more durable as well. Powder Coating can be retouched and even refinished if needed.

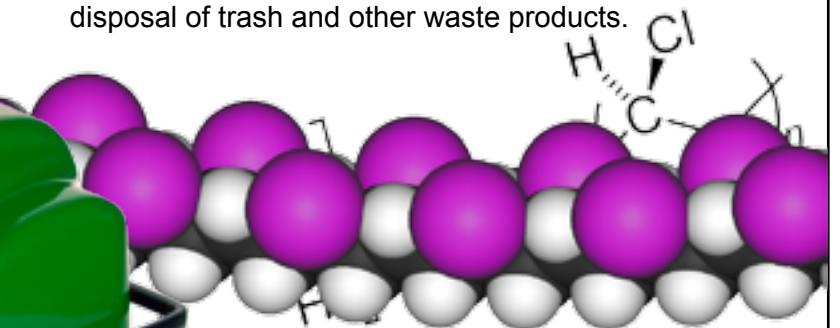
## 100% RECYCLABLE CART

With the elimination of the chroming process and removal of all PVC from its plastic components, Mart Cart® engineers have created the first **100% Recyclable Electric Cart**.



## PVC FREE

The XTi12™ **GREEN** cart is PVC free. Why is this important? Because according to the EPA harmful dioxins are an unavoidable consequence of both the production and the incineration of PVC (Polyvinyl Chloride). In fact the EPA states that PVC is likely the #1 source of dioxin poisons produced in the general disposal of trash and other waste products.



What's more, "vinyl chloride emissions from PVC production result in an increase in mortality and serious, irreversible illnesses" among plant workers in the PVC industry according to EPA studies. Reasons enough for the removal of PVC from all Mart Cart® products.



# 63

In 1963 Congress passed the **Clean Air Act** - authorizing the federal involvement in air pollution efforts. This act spearheaded the development of

a national program to address air pollution related environmental problems as well as the research into techniques to minimize air pollution.

The Clean Air Act has since played an enormous role in our current understanding of clean air issues and the impact our actions have on our environment.

With this knowledge the manufacturing community has made great strides in eliminating procedures and products we know pose a threat. Though there is still more to learn, the course has been set. At Mart Cart®, we are committed to following this course to a better, cleaner tomorrow.

## INTRODUCING A RADICALLY NEW CONCEPT IN FRONT WHEEL DRIVE!

Mart Cart®, the leader in electric shopping carts, introduces the XTi 12™, its newest and most innovative electric shopping cart yet. The XTi 12™ is like no other cart on the market. It features a revolutionary new patented hub motor. The front wheel actually IS the motor, a unique new design in front wheel drive technology.

Maneuvering store aisles has never been easier. Handling is easy and effortless because the XTi 12™ actually turns within the diameter of the rear axle. The cart will turn within the length of the cart and needs less than 1.5 m (5 ft) to complete a 180 degree reversal in direction.

Energy consumption is at an extreme low, which saves battery life and battery replacement costs. The design is simple and efficient. Parts are reduced to a minimum. Service is simple and easy. Maintenance costs will be the lowest of any cart on the market, which will provide the **LOWEST COST OF OWNERSHIP** of any cart available.

## MAXIMUM PERFORMANCE AND EXTENDED BATTERY LIFE

Improper charging is the #1 killer of Electric Shopping Cart batteries – and – simply not knowing what the cart needs is the #1 cause of improper charging. The NEW Intelli-Charge™ system from Mart Cart® puts an end to the confusion. Using both an audible and visual notification feature, the Intelli-Charge™ system tells you and your shoppers more than ever about your carts charging needs. The system tells you when your cart needs charging, when it is in the process of charging and when the charging cycle is complete and the cart is ready to drive. The NEW Intelli-Charge™ system will add years to your battery's life.

## QUALITY AND PERFORMANCE

Mart Cart® has long been recognized as the quality leader in its field. The XTi 12™ carries a warranty second to none in the industry. Ten year warranty covers the steel frame, one year warranty covers parts, charger and battery, and a one year warranty covers labor.

## ENERGY USAGE

Power usage is minimized to only 3 AMPS. The draw on the battery is so low, the XTi 12™ will operate for up to 22 hours of shopping in the store between charges.

## CAPACITY

Mart Cart® has always offered the strongest line of electric shopping carts on the market, featuring a steel frame and a steel seat mounted directly to the frame. The XTi 12™ is no exception offering a rider capacity of 249.5 kg (550 lbs) with an additional 90.1 kg (200 lb) basket capacity, for a total of 340 kg (750 lbs).

### PHYSICAL SPECIFICATIONS

72.5 kg (160 lbs)  
20.3 cm (8 in) Non-Marking Solid Rubber Tires  
80 cm (31.5 in) Turning Radius  
340 kg (750 lb) TOTAL Capacity  
249.5 kg (550 lb) Rider Weight  
90.1 kg (200 lb) Basket Capacity

### DRIVE SYSTEM

Exclusive Hub Motor drive system  
1/4 HP continuous, 1/2 HP Peak  
Regenerative/Dynamic Braking  
3.4 KPH (2.1 MPH) Forward Speed  
1.6 KPH (1.0 MPH) Reverse Speed

### ELECTRICAL SYSTEM

Single 12-Volt 35 Amp Hour Battery  
3 Amp, 4 Stage Smart Charger  
Waterproof Pulse Width Modulator Control  
Exclusive Intelli-Charge™ Battery Monitoring System  
1.8 m (6 ft) Coiled Charging Cord with Improved Storage

### SAFETY

Seat Safety Switch  
Regenerative/Dynamic Braking  
Anti-Tip Swivel Castors  
Emergency Stop Switch  
Horn and Reverse Warning Beeper  
Charger Inhibit for Drive-Off Protection  
3 Manual Reset Circuit Breakers  
Battery, Reverse Polarity Protection  
Low Charge Indicator / Intelli-Charge™ System

### CUSTOMER INTERFACE

Heavy Duty 45.7 cm (18 in) Seat, Fully Padded w/ Lumbar Support  
Padded Armrests, Pivot upward for Maximum flexibility  
Exclusive Wag-Flag Controls, Ergonomic & Multi-Use Capable  
Keyed or Keyless Operation

### ADDITIONAL FEATURES

2.5 cm (1 in) Tube Steel Frame, 16 Ga.  
Fixture Height Rear Bumper and Full Length Basket Bumpers  
10 hours continuous run time, 20 hours shopping run time

## Customize and Personalize the Mart Cart® XTi12™ for your stores.

Choose accessories that will encourage longer shopping time and options that make life easier!



**Armrests** (200-1806) Durable padded Armrests added to the standard XTi seat. Armrests pivot upward to allow easy entry and exit for your riders.

**XTi™ Jumbo Basket** (200-1374) 180.25 cu cm (11,250 cu in) with Lower Shelf, 204 kg (450 lb) Capacity (in place of standard basket) Increases payload capacity & cash register receipts.



**Junior Speciality Basket** (280-1242) 49.1 cu cm (3,925 cu in) - 35.5 X 43 X 35.5 cm W X L X H (14 X 17 X 14 in) (In place of standard basket) Perfect for smaller aisles.

**Crutch & Cane Holders** (200-1609) Basket Mounted - Holds crutches and canes securely in an upright position. Includes user signage.



**Folding Produce Tray** (200-1152) Protects delicate fruit from other groceries.

**Chek-Riter** (200-1586) stand mounts to steering column. Holds grocery list and provides desk platform for writing checks.



**Sliding Seat, Adjustment** (200-1739) (Factory installation required. Not to be used with Oxygen Tank Holder), allows seat adjustment in 4 positions.



**Oxygen Tank Holder** (280-1341) Holds oxygen bottle securely at rear of cart.

**Retractable Cord Reel** (200-1740) 1.8 m (6 ft), 110 Volt Stores and protects cord from wear and neglect.



**7 Amp Charger With Inhibitor** (280-1554) Single Input Voltage, 115V (Exchange, factory installation required).

**Bike Flag Safety Flag** (200-1736) Increases cart visibility in store.

*Outstanding Performance! Outstanding Value!*

## ONE-YEAR BATTERY WARRANTY!

The Mart Cart® XTi-12™, with simplicity of design and forward thinking engineering, has proven to be the electric shopping cart with the **Lowest Cost of Ownership** of any cart on the market. With a ONE-YEAR BATTERY WARRANTY, it is the greatest value on the market and backed by the best warranty.

No other electric cart offers such a strong warranty. Why? Because they know that battery replacement is the number one maintenance item. Over the life of a two-battery 24-volt system, replacing batteries can cost a store hundreds of dollars! The XTi™ one-battery 12-volt system is the most efficient system on the market and saves money in numerous ways, especially in battery replacement. A single battery on an XTi™ can last three, four, even five years.

## ***Color Options***



*Note: Colors in this chart may not look like the real body color.*

# **mart cart<sup>®</sup>**

***We Specialize in Shopper's Transportation Needs***

**(+1) 479-636-5776**

115 E. Linden • Rogers, AR 72756 USA • [www.assembledproducts.com](http://www.assembledproducts.com)

Mart Cart XT112™ is a quality product line of Assembled Products™ Corporation. Mart Cart XT112™ Patent Pending.

